

RESOLVE IBIS



21.5K BBL Oil Recovery Tank Barge
Oil Spill Response Service

MAIN BARGE PARTICULARS

Length, Overall	200 ft	60.9 m
Beam	48.1 ft	14.7 m
Depth	15.5 ft	4.70 m
Maximum Draft	13.1 ft	4.00 m
Deadweight		2932 lt

BARGE TONNAGE

Gross Tonnage : Domestic/International	1325 t/1103 t
Net Tonnage : Domestic/International	1325 t/934 t

CARGO PUMPS

4 x Hydrostar B30 Hyd Motor powering 4 x Viking 6" Model NR332 cargo pumps	
4 x Viking 6" Model NR332 cargo pumps :	
Cargo Pump Engines	
	2 x GM4 - 71
	2 x GM6 - 71

ELECTRICAL / COMMUNICATIONS

VHF Radio (Intrusically Safe)	
110 Volt AC	
32 Volt DC	
Electronic Tracker	

MACHINERY

1 x 2-71 Aux Drive 30kw Generator

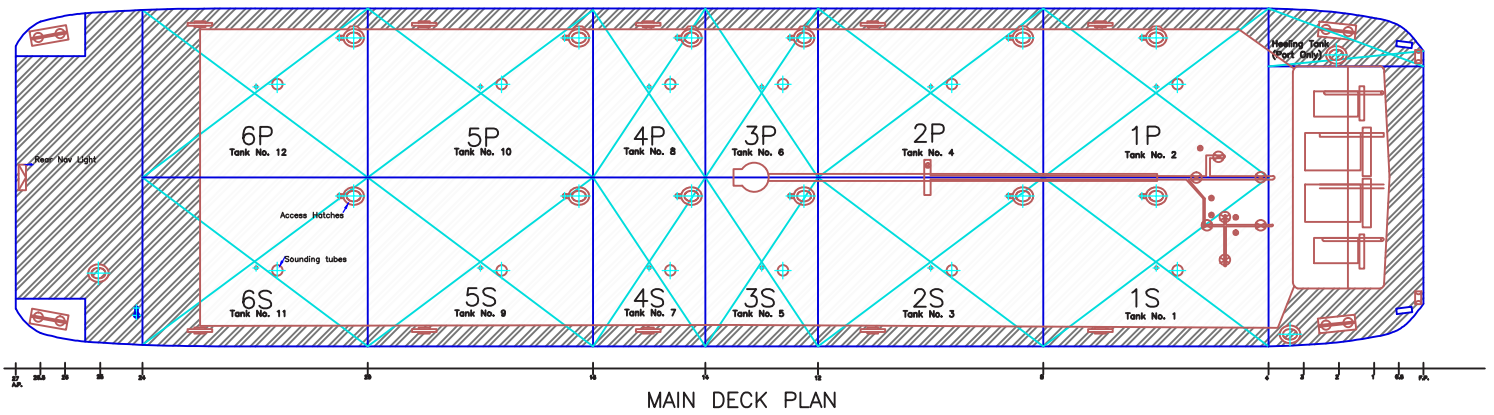
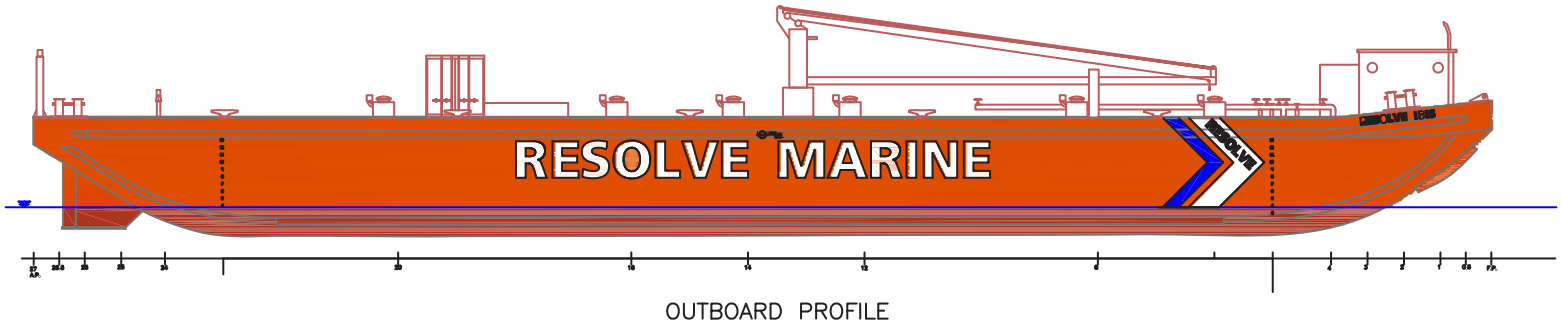
HOSE HANDLING DERRICK

Marine Derrick, Machine Works, Inc., CAP 1800#

Hook #1:	
Length of boom	58 ft
Reach over side	34 ft
Max Load	2000 lb
Hook #2:	
Lift Point	41 ft
Max Load	1000 lb
Hook #3	
Lift Point Length	27 ft
Max Load	1000 lb

REGISTRATION

Flag	USA
Home Port	Dutch Harbor, AK
Official Number	291267
Call Sign	WDD4657
Builder	Todd Shipyard, Seattle, WA
Class	ABS LL
Service	Oceans



CAPACITY

Usable Deck Area	3600 Sq Ft.	
Max Deck Load	950 psf	
Total Tank Capacity	21,403 BBL	30515 MT
Tank	P	S
1	2140 BBL	2140 BBL
2	2152 BBL	2152 BBL
3	1076 BBL	1076 BBL
4	1076 BBL	1076 BBL
5	2152 BBL	2152 BBL
6	2106 BBL	2106 BBL