

# RESOLVE PIONEER

80T BP



207' AHTS

## MAIN PARTICULARS

Length, Overall	207.0 ft	63.1 m
Beam	40.0 ft	12.2 m
Depth	17.0 ft	5.2 m
Maximum Draft	16.07 ft	4.9 m
Deadweight	902.0 lt	916.4 t
Minimum Height	65.0 ft	19.8 m

## CAPACITIES

Fuel Oil	127,235 gal	410.2 t
Potable Water	53,810 gal	203.5 t

## MACHINERY

Main Engines (2)	E M D 16-645E7	
Horsepower	5750 BHP	
Propellers (2)	4 Blade; CP 132 in. Dia. (CPP + Kort)	
Generators (3)	150 kW/ 230 V/ 60 hZ (total)	
Bow Thruster	400 BHP	

## PERFORMANCE *Assuming Fair Weather*

Speed	
Maximum	About 15.6 knots
Cruising	About 12 knots
Economical	About 8 knots
Range at 10.0 knots	About 10,316 nm
Bollard Pull (ABS Certified)	80 st

## TOW & ANCHOR HANDLING

Winch (1 x 2 drums)	SMATCO WF / 72 DAW 250
Line Pull	300,000 lbs
Capacity	3,000 ft of 2-1/4 in (each)
Tugger (1)	Electro-Hydraulic / 10,000 lbs
Shark Jaws / Towing Pins	Smith Berger 200 mt-Hydraulic
Stern Roller	5 ft x 12 ft

## ACCOMMODATIONS

Standard Crew	9 persons (including Master)
Total certified to carry and accommodation available (with redundancy)	24 (36 with portable 12 person unit) *can be added at a moments notice.*

## ELECTRONICS / COMMUNICATIONS

Fully fitted with modern navigation equipment (with redundancy)  
V-SAT (Maritime satellite communication service)  
INMARSAT Fleet Broadband Communications Systems

## SPECIAL EQUIPMENT

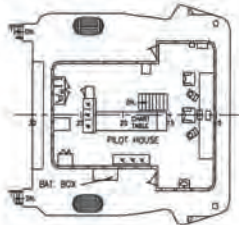
Stabilization System	YES
Rescue Boat	6 Person Capacity/RIBO 450
Fire Fighting Deck Equipment	2 x 16" Direct Sea FiFi Suction
4-Point Mooring Capable	YES
Deck Crane:	
Make/Model	Palfinger/PK50002EHG
Rated Capacity	Max SWL 5.5t at 22.3ft/1.12t at 68ft

## REGISTRATION

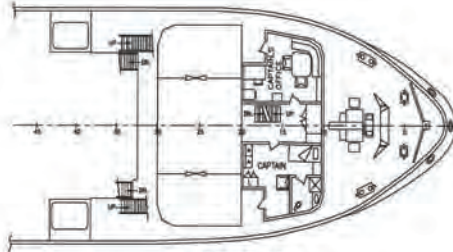
Flag	United States
Home Port	Wilmington, DE
Official Number	597409
IMO Number	7528843
Call Sign	WDD8846
Builder	Campbell Industries
Hull Number	121
Tonnage	299 GRT / 203 NRT (Domestic)
Towing Service	Ice Class C
Class	ABS +A-1, AMS, E

# RESOLVE PIONEER

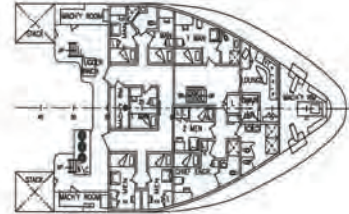
## 207' AHTS



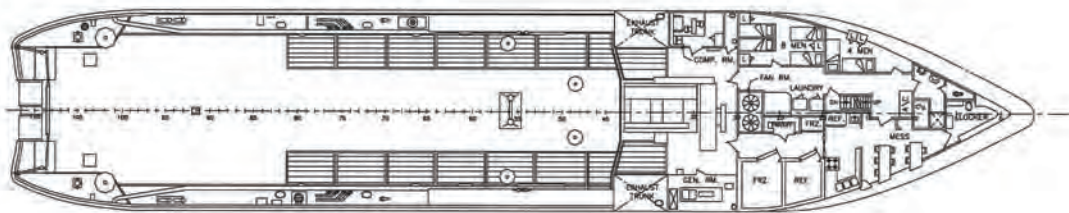
PILOT HOUSE



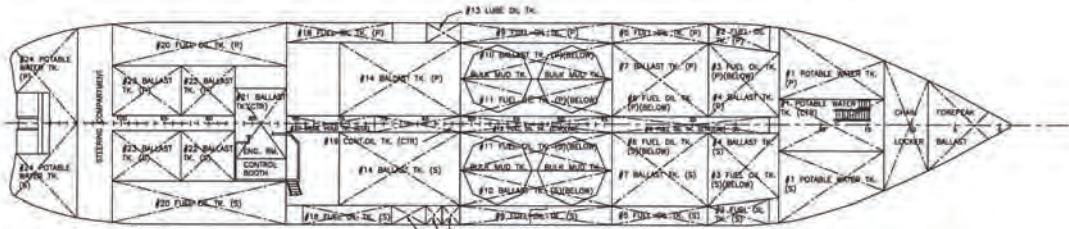
FOC'SLE DECK



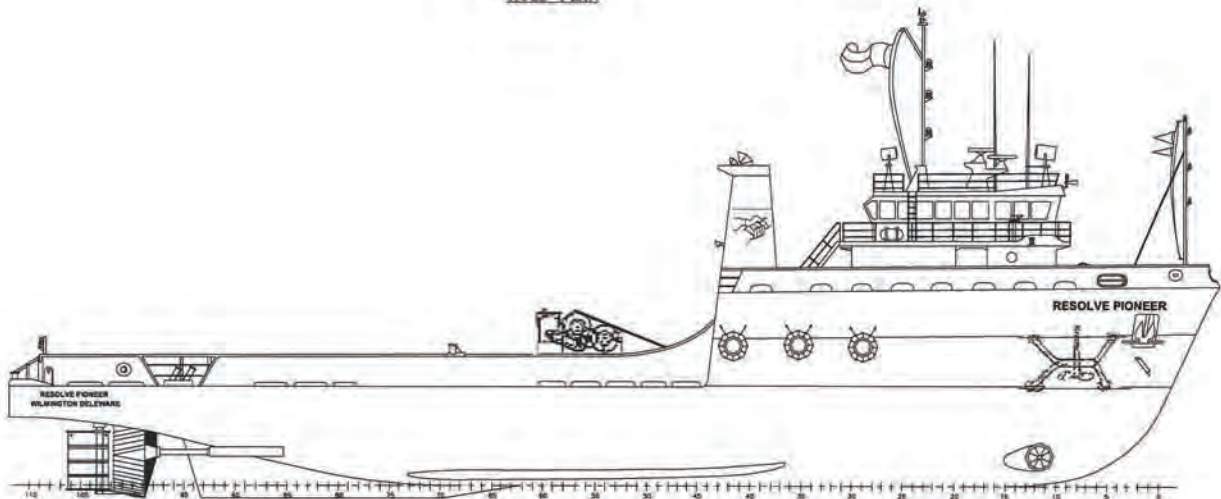
CABIN DECK



MAIN DECK



HOLD PLAN



PROFILE